

How configure the browser (Firefox Windows)

From the **Firefox** menu bar, click **Tools** and select **Options** (fig. 1).

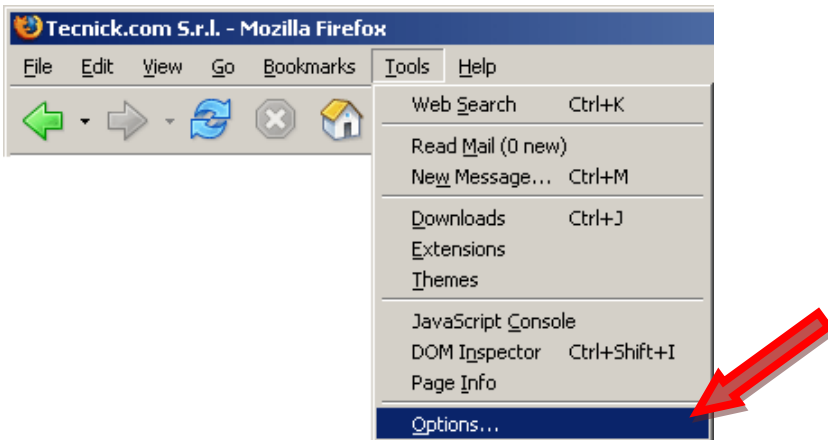


Figure 1

Click the **Advanced**, select **Network** tab and then **Connection Settings** button (fig.2).

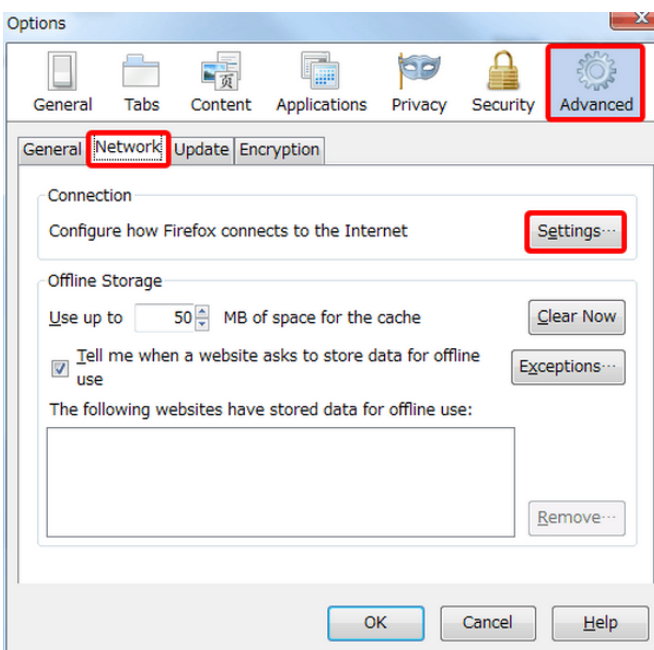


Figure 2

Select **Automatic proxy configuration URL** and type below <http://www.luiss.it/httpgw.pac> (fig. 3)

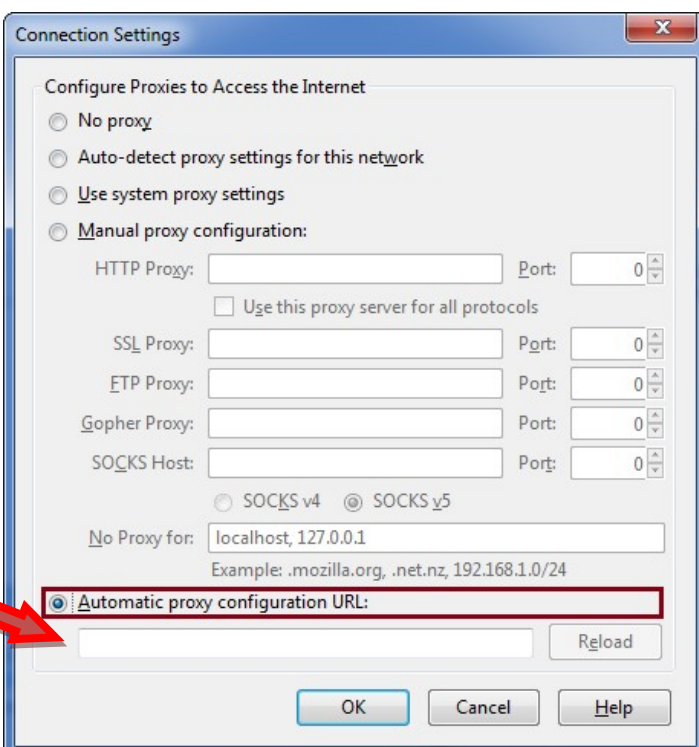


Figure 3