

How to configure the remote access if you are using Internet Explorer 7 (Windows):

From the **Internet Explorer** menu bar, click **Tools** and select **Internet Options** (fig. 1).

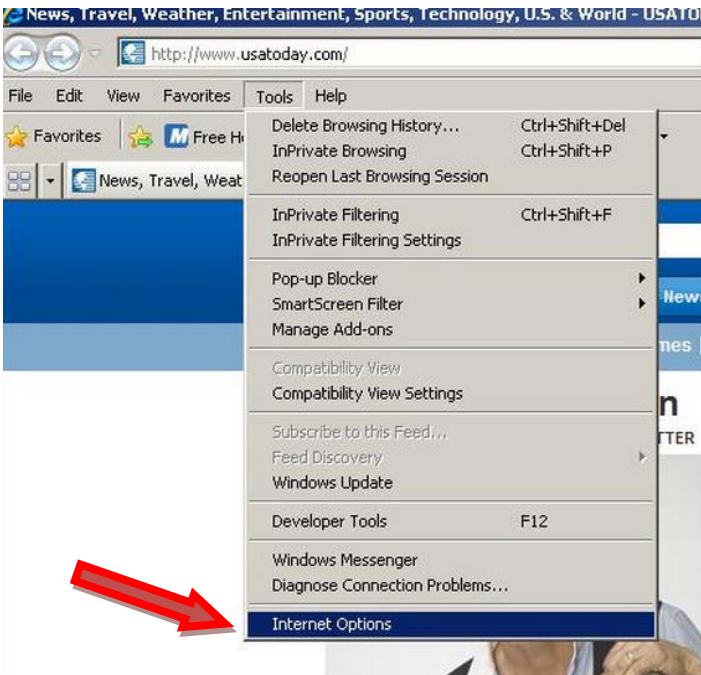


Figure 1

Click the **Connections** tab and then in **Dial-up and Virtual Private Network settings** select your connection (fig. 2).

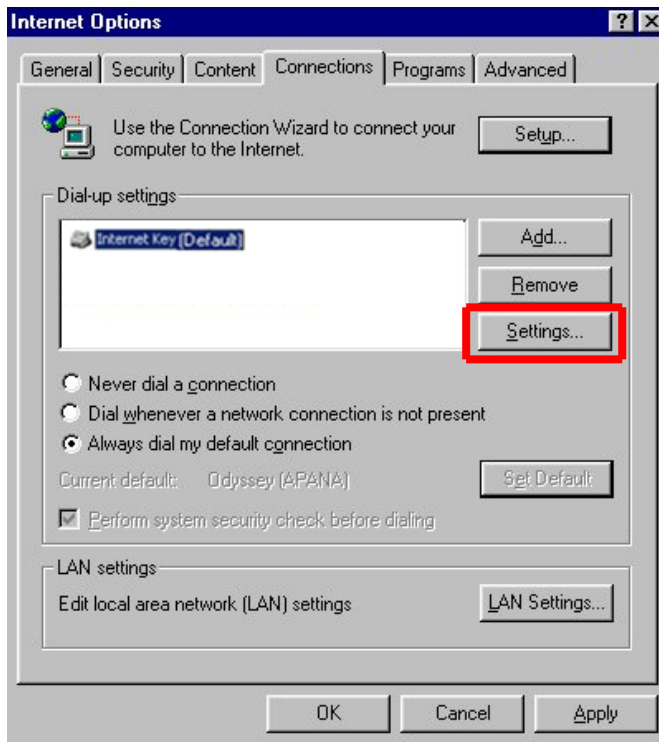


Figure 2

Select **Use automatic configuration script** and in **Address** enter <http://www.luiss.it/httpgw.pac> (fig. 3).

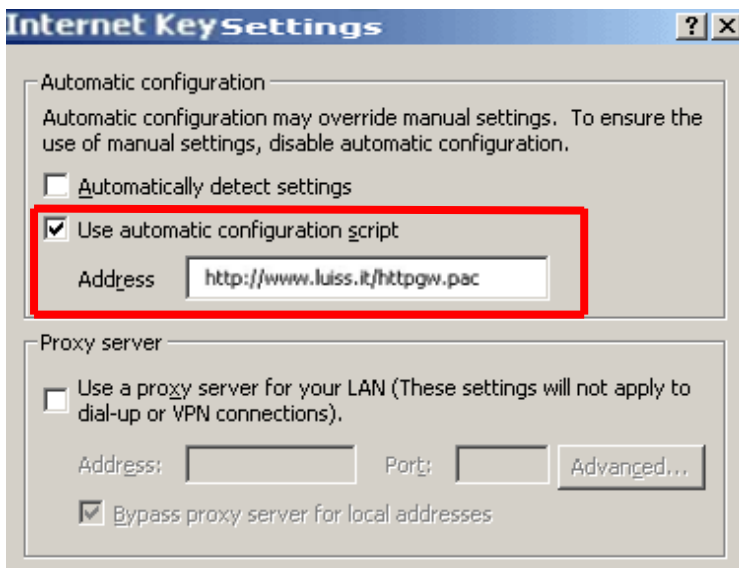


Figure 3