

**Luiss**

Libera Università Internazionale  
degli Studi Sociali Guido Carli

# Proxy Configuration

## Google Chrome for Windows

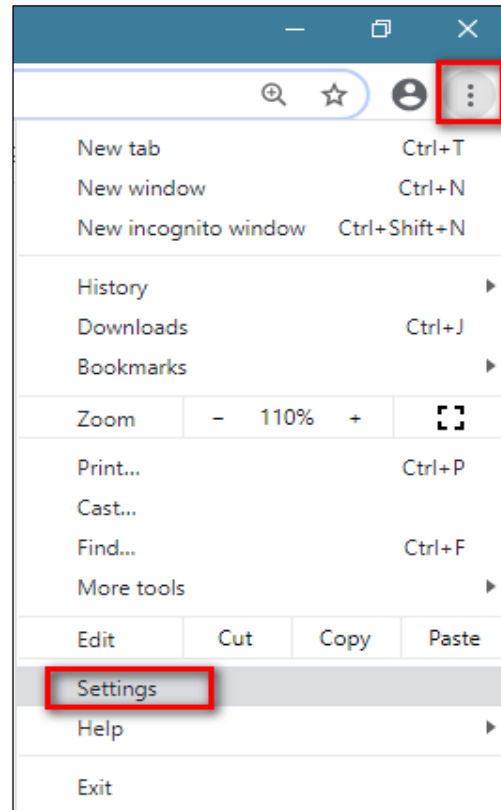
Google Chrome – Version 79.0.3945.130 (64 bit)  
[Last Update: 01/2020]

LUISS



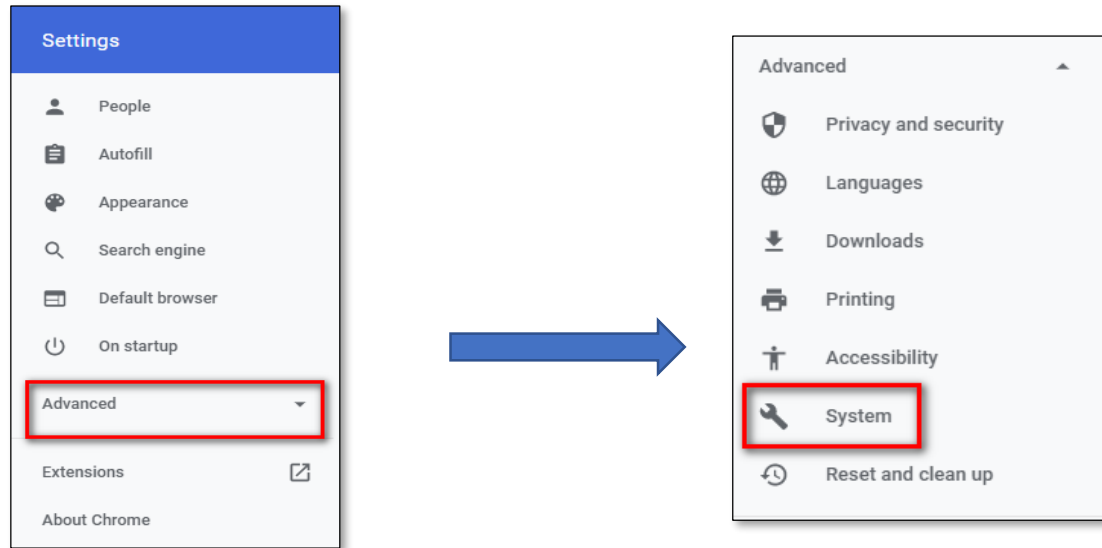
# Library

1. Click **Chrome menu** in the top right corner of the page and select **Settings**:

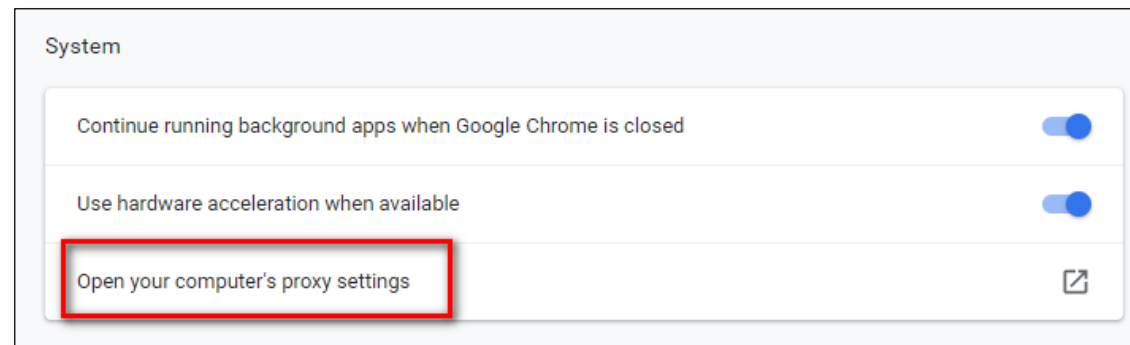


# Library

2. Click **Advanced** on the sidebar menu and select **System**:

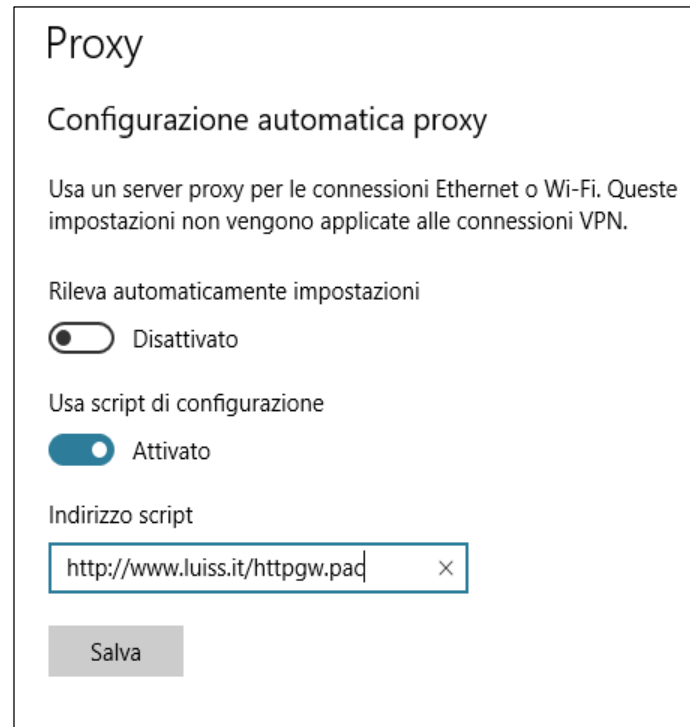


3. Click **Open your computer's proxy settings**:



# Library

4. In the Proxy Tab check **Automatic Proxy Configuration**, set “Rileva automaticamente impostazioni” as inactive and the “Usa script di configurazione” as active and type the link <http://www.luiss.it/httpgw.pac> in the “Indirizzo script” field and click on **OK**.



Proxy

Configurazione automatica proxy

Usa un server proxy per le connessioni Ethernet o Wi-Fi. Queste impostazioni non vengono applicate alle connessioni VPN.

Rileva automaticamente impostazioni

Disattivato

Usa script di configurazione

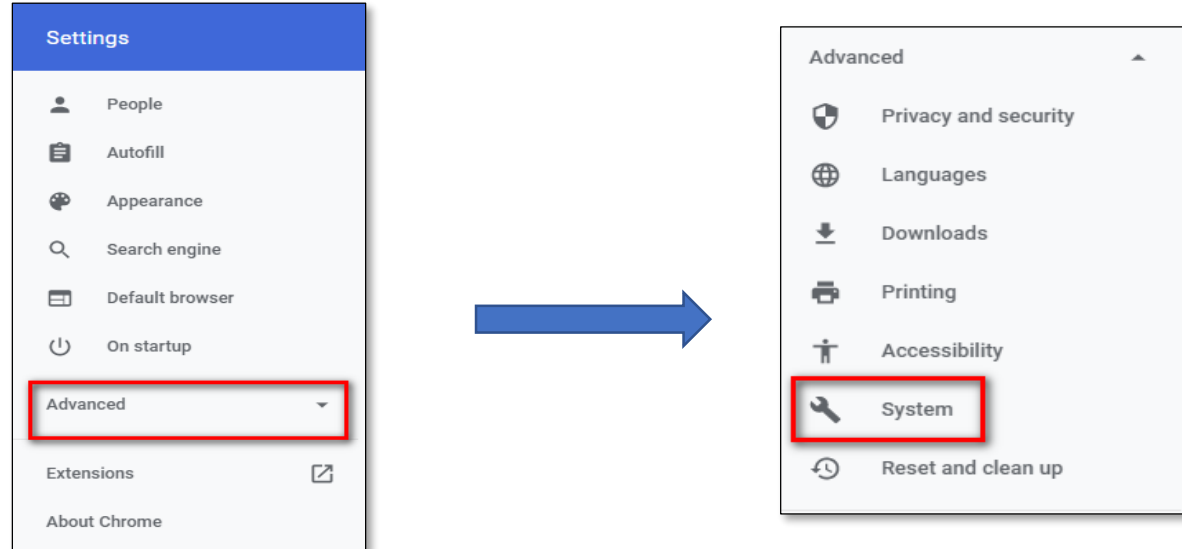
Attivato

Indirizzo script

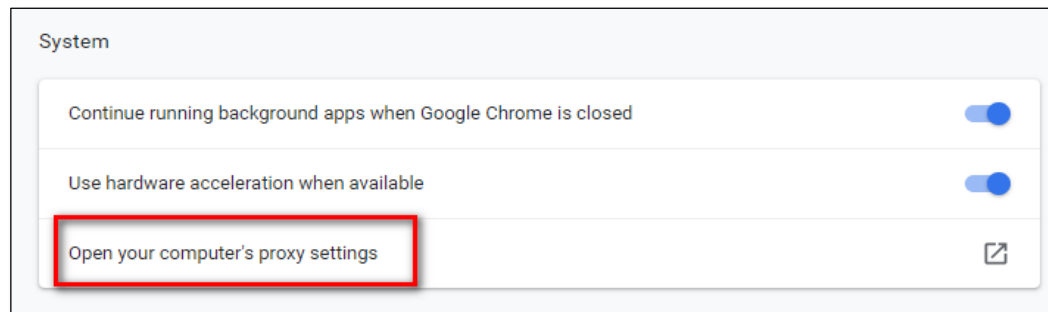
Salva

# Library

To disable the proxy, go back to the **Connection Settings**. Click **Advanced** on the sidebar menu and select **System**:



1. Click **Open your computer's proxy settings**:



# Library

2. In the Proxy Tab check **Automatic Proxy Configuration**, set “Rileva automaticamente impostazioni” as active and the “Usa script di configurazione” as inactive.

Proxy

Configurazione automatica proxy

Usa un server proxy per le connessioni Ethernet o Wi-Fi. Queste impostazioni non vengono applicate alle connessioni VPN.

Rileva automaticamente impostazioni

Attivato

Usa script di configurazione

Disattivato

Indirizzo script

Salva